

ICEFX

Introduction to ICE FX

Review of the investment system in an accessible form.

A brief review of the main aspects of the ICE FX investment system in a simple and understandable form.

Getting Started

The process of working with the Company is the following:

1

Registration

With the Company as a customer.
You may contact the "Technical Support Service" for any question.

2

Verification

This is a binding process, which serves as a proof that you are a real person and have one account with our Company. You may contact the "Technical Support Service" for any question.

4

Investment

Working with the Company's investment products.

It is recommended:

To study the maximum amount of information on the Company's website;
To contact your agent or personal manager for advice;
You may immediately contact the "Technical Support Service" for any question.

3

Depositing the account

You may deposit the account by any available means. You may contact the "Technical Support Service" for any question.

The Company offers a range of additional support to medium and large investors

Your Deposit

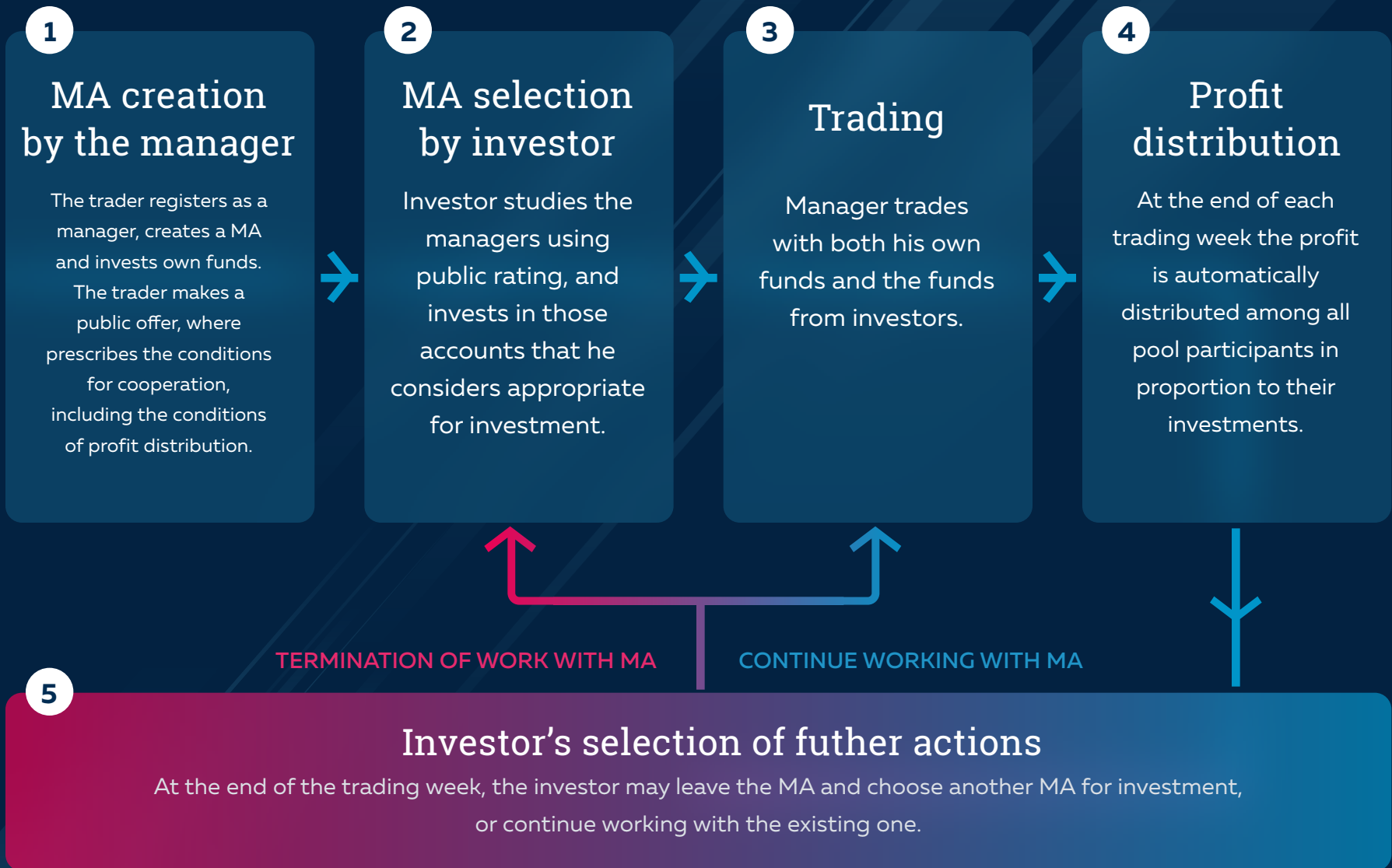


Managed accounts

Managed accounts (MA) is an additional ICE FX service, which allows for interaction between managers and investors.

Thanks to it, the investor may give funds to be managed to the manager you like. In this case, all the investment terms are regulated in advance (MA offer), and the calculations are automated. Thus, the investor does not have to stipulate the investment conditions with each manager individually and perform manual calculations.

How MA works?



Multiplication

Selection of risk and return.

Multi-MA (or the Managed account with multiplication) extends the functionality of using the conventional Managed account (MA) through the provision to the investor of several accounts of the same manager with varying degrees of trade aggressiveness.

The trading of a trader may be too conservative for some investors who prefer more significant indicators of profitability and agree to an increased risk.

How multiplication works?

1

Several accounts are created for the manager: the "key" one (the most conservative one), and its multi-copies (more aggressive accounts).

2

Trading on all accounts is completely identical, but differs in the degree of aggressiveness.

3

The investor may choose the acceptable MA aggressiveness.

Key account (x1)

The manager trades on this account.

COPYING
RISK X2

x2

Profit x2
Loss x2

COPYING
RISK X3

x3

Profit x3
Loss x3

COPYING
RISK X4

x4

Profit x4
Loss x4

COPYING
RISK Xn

xn

Profit xn
Loss xn

Indices

Ready-made portfolio products for the investor.

What is Index?



The Index is a ready-made portfolio compiled by the Company's specialists.



The Index is designed to ease the process of investing for those customers who need "turnkey solutions", because of the lack of time, knowledge, or the possibility to analyze MA and compile a portfolio independently.

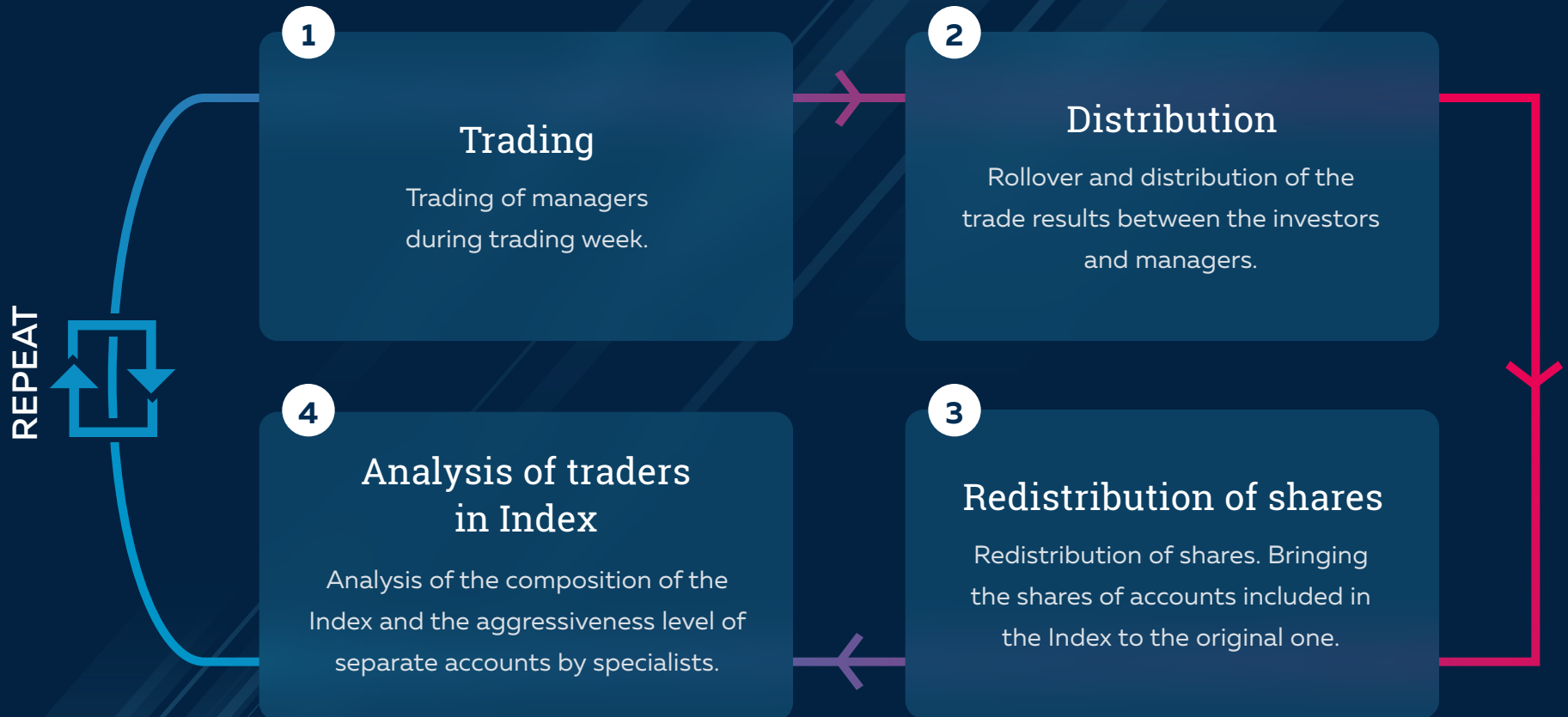


The Index is a full investment portfolio, so up to 100% of your portfolio in the Company may be invested in it.



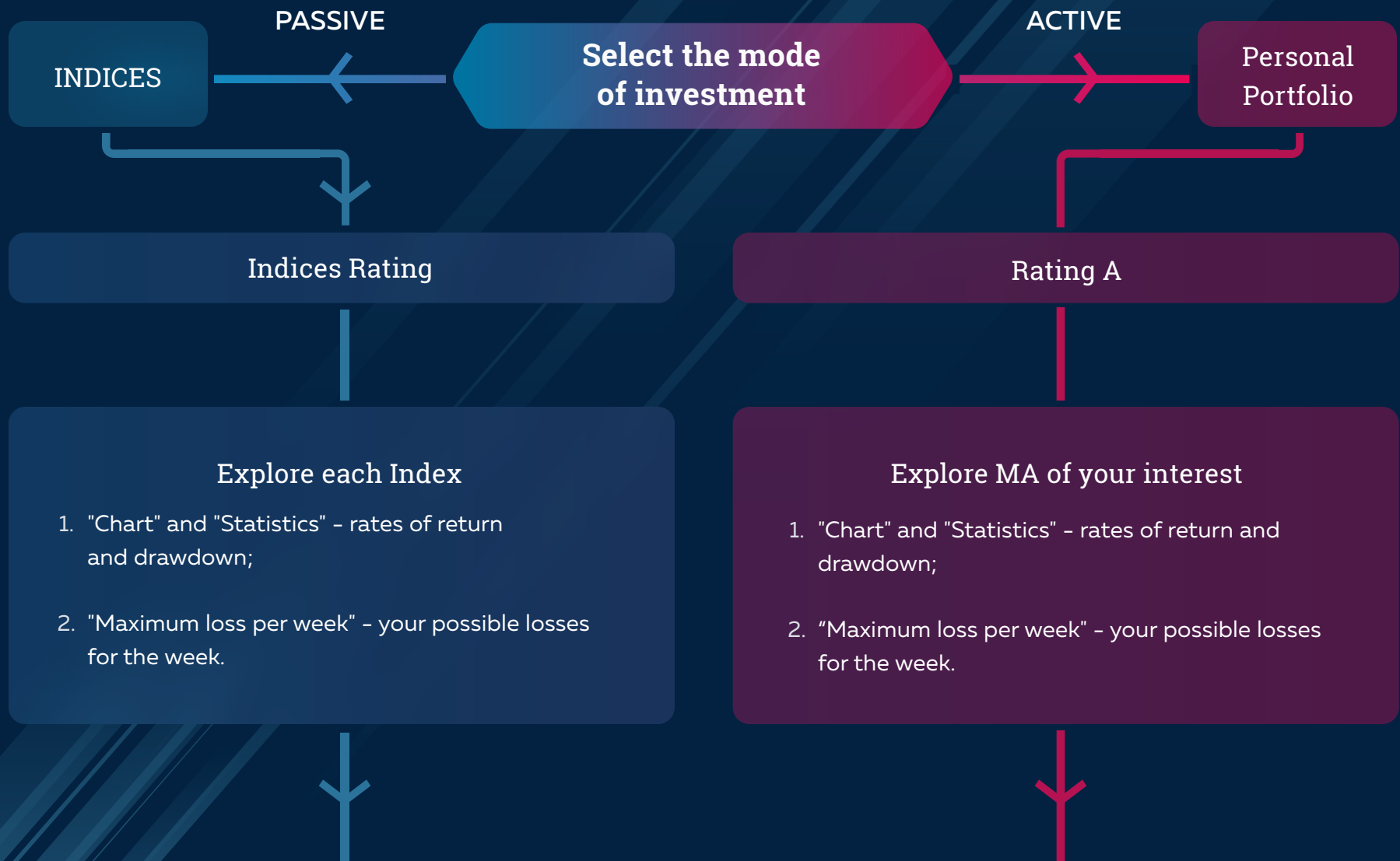
All Indices are formed only from the managers who have been selected by specialists.

How Indices works?



Investments

Action sequence. Step by step.



Select proper Index

1. Group (iPro, iMain, iComposite, iMinor);
2. Multiplier (*1, *2, ... *6).

Select proper MA

1. MA (Solandr, Celdic, etc.);
2. Multiplier (*1, *2, ... *6).

Tailor a portfolio of selected MA using the following rules:

1. The MA number - at least 4;
2. All accounts with the same value of the multiplier (all *1, or all *2, etc.);
3. To all MA - equal shares in the portfolio (equal amount of funds).

Risk management is already configured



Invest



Company creates the Index of managers, who correspond to the requirements of managers in the Index.



\$2 000



\$5 000



\$1 000

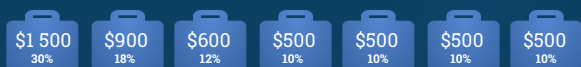
\$1 000

\$1 000

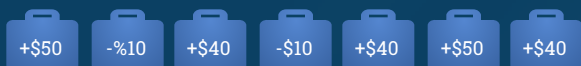
Investors evaluate Index results and make a corresponding investment decision.



Investors' funds are proportionally allocated among all Managed accounts which compose the Index.



Manager of the Index receives performance fee only based on his trading results, regardless trading results of other managers in the Index.



Company is allowed to change the composition of the Index anytime along with the shares of MAs in it. Company will notify all the clients about that in advance.



Investors in the personal cabinet can watch the dynamic and composition of the Index.



Performance fee for the manager according to the public offer.



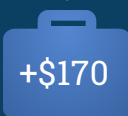
\$ 1000

+\$30

+\$68



+\$200



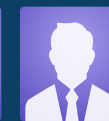
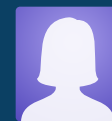
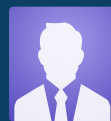
+\$170



+\$34

+\$34

+\$34



\$1 000

+\$1 000

\$1 000

Profit excluding performance fee for the manager.

ICEFX

2017

www.ice-fx.com

Почта для связи:
support@ice-fx.com